

Meet EAHP Homebuyers



Close to My Work

Hong Kang, her husband, and two daughters live in Hyde Park. "It was very helpful that somebody talked through the purchasing process with us. Our new home is close to where I work and to shops and restaurants. Our place is big, and we have a big backyard with a garden where the children love to play."

A Blessing

Demiah Bryant lives in Woodlawn. "I was attracted to my new neighborhood because it is diverse, friendly, and safe. It's also close to the Midway, the 63rd Street Beach, and the South Shore Cultural Center. Living here has exceeded my expectations. This program has been a blessing to me, and I hope that it is a blessing to others."

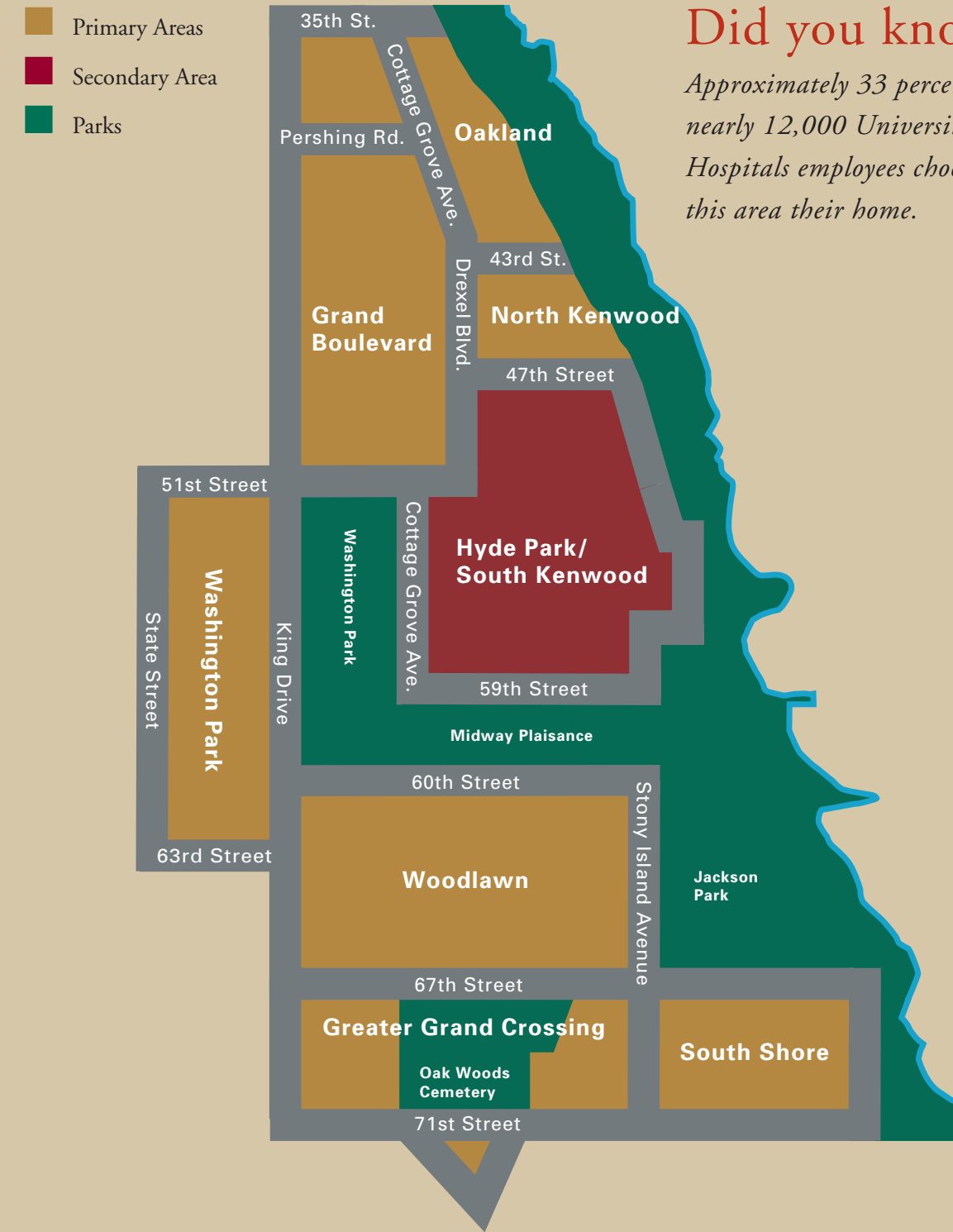


I Love My Home

Rifat Hassina and son, Rafi, live in Woodlawn. "I love my home. We have a very large backyard, and my son loves to play outside with neighborhood children. I wouldn't have been able to buy a home on my own. The money, consultations, tips, and references for banks and loans all helped make this happen."



Where You Can Purchase



Did you know?

Approximately 33 percent of our nearly 12,000 University and Hospitals employees choose to make this area their home.

The EAHP is a project of the University of Chicago and the University of Chicago Hospitals in collaboration with Neighborhood Housing Services of Chicago (NHS), the Metropolitan Planning Council (MPC), and the City of Chicago Department of Housing (CDOH).



The University of Chicago and
The University of Chicago Hospitals

Making Home Buying a Reality



The University of Chicago & The University of Chicago Hospitals
Employer-Assisted Housing Program

EMPLOYER-ASSISTED HOUSING PROGRAM (EAHP)

Live Near Your Work



Qualified employees of the University of Chicago and the University of Chicago Hospitals can now take advantage of a new homebuying education and incentive program which makes it easier and more affordable to buy a home close to campus.

Avoiding the hassles and expenses of commuting is one advantage of living close to work. You and your family will also enjoy many of the city's best cultural attractions, ethnic restaurants, and picturesque parks. Downtown amenities, major highways, and public transportation are easily accessible from all community areas included in the EAHP.

Join Our Growing Communities



The University of Chicago and the University of Chicago Hospitals are deeply rooted in the local communities of the mid-South Side of Chicago. When you find a place to call home in this area, you become part of a neighborhood with a venerable history and a vision for the future. Progress is made daily as the University and Hospitals work together with their community partners on shared goals that promote safety, help improve our schools, encourage retail development, and support beautification and neighborhood pride. The EAHP strengthens this ongoing commitment to the revitalization of mid-South Side communities.



EAHP Offers You Many Advantages



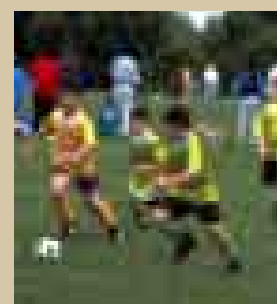
Through the Employer-Assisted Housing Program, you can receive:

- a University- or Hospitals-sponsored \$7,500 interest-free loan that will be completely forgiven over a five-year period as long as you remain an employee of the University or the Hospitals and the home is your primary residence;
- **homebuyer and financial education** through Neighborhood Housing Services of Chicago (NHS); and
- information on a full range of available **homebuyer assistance programs**, including those offered by the City of Chicago Department of Housing (CDOH)



You may take advantage of this program if you:

- are a **benefits-eligible employee** of the University of Chicago or University of Chicago Hospitals for a minimum of one year or if you are a new University staff member relocating to accept a position
- can contribute **3 percent** of the purchase price towards a **down payment**
- are interested in buying a home in the following **eligible community areas**: **Primary areas:** Grand Boulevard, Greater Grand Crossing, North Kenwood, Oakland, South Shore, Washington Park, Woodlawn; **Secondary area:** Hyde Park/South Kenwood
- have a **household income** that falls within specified guidelines:



Maximum Household Income

Household Size	Eligible Communities	
	Primary Areas*	Secondary Area**
1	\$72,384	\$60,320
2	\$90,480	\$75,400
3 or more	\$105,560	\$86,710

* Grand Boulevard, Greater Grand Crossing, North Kenwood, Oakland, South Shore, Washington Park, Woodlawn

** Hyde Park/South Kenwood

- are a **first-time homebuyer** interested in becoming a homeowner in the Primary or Secondary Areas, or are an **existing homeowner** interested in moving into the Primary Area. (See the back cover of this brochure for a map showing the areas.)
- find a single-family home, town house, two-flat, or condominium to use as a primary residence within the **purchase price guidelines** on the next panel:



Maximum Purchase Price

Type of Housing	Eligible Communities	
	Primary Areas*	Secondary Area**
Existing (one unit)	\$398,315	\$325,894
New construction (one unit) or new condo conversion	\$398,315	\$325,894
Existing (two-flat)	\$448,629	\$367,060
New construction (two-flat)	\$448,629	ineligible

* Grand Boulevard, Greater Grand Crossing, North Kenwood, Oakland, South Shore, Washington Park, Woodlawn

** Hyde Park/South Kenwood

Note: The University and Hospitals EAHP follows guidelines established by the City of Chicago Department of Housing (CDOH). Hyde Park/South Kenwood is considered a secondary community development area under these guidelines, resulting in lower household income and purchase price limits for program qualification. EAHP guidelines may be adjusted periodically to reflect CDOH program updates.

Five Steps to Home Ownership

- Step 1 Contact University of Chicago Housing Services at 773-702-3420 to apply for the EAHP program.
- Step 2 Meet with a Neighborhood Housing Services of Chicago consultant and attend NHS homebuyer education seminars.
- Step 3 Find a qualifying house or condominium and enter into a sales agreement for purchase.
- Step 4 Obtain a mortgage and schedule your closing.
- Step 5 Buy a home with \$7,500 assistance.

To Learn More

Employees of the University of Chicago and the University of Chicago Hospitals who are interested in applying for the EAHP should contact:

The University of Chicago Housing Services
5501 South Ellis Avenue, Chicago, Illinois 60637
Telephone: 773-702-3420